



ACME GARMENTS UNIT.

A BRIEF WALKTHROUGH

2024



SINHA Knit Industries Limited



KNITWEAR UNIT

A leading garment manufacturer based in Bangladesh. Specializing in knitwear, the company excels in quality production, and innovative designs for Europe & Asia.

Global leading brands like ZARA, BERSHKA, PULL&BEAR, and STRADIVARIUS (INDITEX) are our key valued customers.

In 2024, we increased capacity with investment in automation (200+ Shima Sheiki jacquard machines)



SINHA KNIT INDUSTRIES LTD.



SINHA Knit & Denims Limited



DENIM UNIT

SINHA Denims is a leading Denim manufacturer from Bangladesh. Specialized in multiple products but the key products are jackets, pants, twill, cargo, shorts, workwear, etc.

Using sustainable machines and methods in our washing units to reduce water and chemicals. We believe in newness and we are focusing on technology-based services like automation in design (Laser), cuttings, pocket attachments, etc.

SINHA KNIT & DENIMS LTD.



DESIGN HUB

AminaZ is our “Design Hub” of ACME GARMENTS UNIT. Aminaz is named after our Hon’ble chairman madam & her 3 sons.

The design teams collaborate using a global marketing intelligence platform. Designs are conceived and materialized using technologies that are innovative, readily accessible, and production-friendly.

AMINAZ INTERNATIONAL

“OUR COMPANIES”

MANAGEMENT



Chairman, ACME
GARMENTS

Managing Director,
ACME GROUP

As Chairman of ACME Garments Unit, Mr. Mizanur Rahman Sinha is incredibly proud and takes a moment to look back at the journey of ACME Garments Unit and the overall progress of ACME Group. ACME Group, has expanded its horizons beyond pharmaceutical and apparel. ACME have diversified into various sectors with a vision to create a comprehensive ecosystem. He was elected as member of the National Parliament twice and played the role of State Minister of the government's ministry of Health & Family Planning. As a successful businessman and industrialist Mizanur Rahman Sinha was elected CIP (Commercially-Important Person) by the government of Bangladesh twice.



Managing Director, ACME
GARMENTS

Mr. Tanveer Sinha, son of Mr. Mizanur Rahman Sinha, Managing Director and Mrs. Jahanara Mizan Sinha, Deputy Managing Director of the Company. Mr. Tanveer Sinha was officially joined in the Board of The ACME Laboratories Ltd. as a Director, on September 10, 2020, and he is playing a vital role in the board since then. Besides, he is also the Managing Director of Sinha Knit Industries Ltd. Sinha Knit and Denims Ltd. J.M. Sinha and Agriculture Food Processing Industries Ltd. Birgonj Fish Hatchery and Aquaculture Ltd. and AMBE Logistics Limited. He is also Director of ACME Overseas Trading Ltd. Kalyar Packaging Ltd. Kalyar Replica Ltd. Sanjar Aviation Ltd. Marine Coast Resort and Spa Ltd. and ACME Sustainable Agro Limited. In Bangladesh, he has also successfully operated an agent business of Proactive BD with Proactive Europe Ltd. in UK.

The Journey

SINHA GARMENTS

Protecting employees by providing safe & healthy work environments



SINHA Knit Industries Limited

1997- Sweater journey has started with 350 sets flat knitting machine with Mr. Tanveer Sinha as family business under ACME GROUP.

2001- Has been added to enhance its existing capacity to render the services to more customers with more volume

2007 – First Impression started with fully automatic 150 jacquard knitting machine

2016– With 500 fully automatic jacquard knitting machine

2024– 150 Automation jacquard machine investment on SHIMA SHEIKI

2025 – Will increase our Machines to another 200



SINHA Knit & Denims Limited

2016– Sinha Knit & Denims Ltd. journey has started at 2016 on 6.37 acres land with 8 line sewing capacity

2019 – Sewing lines has upgraded to 14 lines

2021– Expanded the sewing capacity to 20 lines

2022 – Investment on sustainable laundry (Ozen machine, laser machine, sustainable wash etc.)

2023 – Structural retro-fitting is in progress

2024 – Expanded the sewing capacity to 24 lines

2025 – Will Expand the sewing capacity to 28 lines



A M I N A Z I N T E R N A T I O N A L

2023 – Aminaz has started as a global apparel buying & sourcing company. Providing range of pioneering solution for global brands and retailer. By combining great product design & quality, with sustainable development, compliance excellence & design innovation.

GROUP AT A GLANCE

ACME GARMENTS UNIT, A diversified business conglomerate of multi-disciplinary business activities mainly production & marketing of pharmaceuticals, textile & garments, food & allied products (consumer products), even in it and other service sectors. The group was started its business journey in the year 1954 as a proprietorship concern founded by late Hamidur Rahman Sinha with a very noble and holistic motto to ensure health, vigor and happiness for all. During this long period of time, it has expanded its business arena and established many projects under the umbrella of the group.

At present the annual turnover of acme garments is about \$620 million US dollar and more than 5,000 people of different grades & disciplines have been working in the group.

550,000 pcs month - KNITWEAR

1200,000 pcs month – DENIM & NON-DENIM

SINHA, is a ready-to-wear apparel company with emerging market growth potential. Having manufacturing base in Bangladesh.

Sustainable Efficiency Target

(Over 2025 Base Year)

	Reduction
Energy	32%
GHG (Greenhouse gas)	29%
Water	12%

EUROPE

Marketing -
Tech-Design

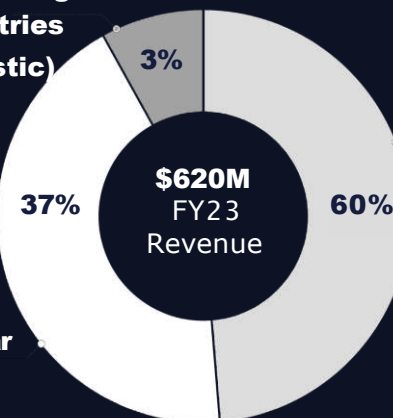
RUSSIA

Marketing &
Sourcing HEAD

BANGLADESH

Design team &
Operation

Supporting Industries (Logistic)



\$620M
FY23
Revenue

DENIM & WOVEN

Knitwear

5,000

Total Employees

60%

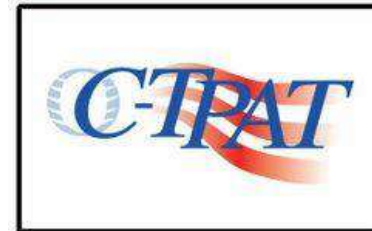
Female

“SINHA KNIT INDUSTRIES LTD.”

is a leading garment manufacturer based in Bangladesh. Specializing in knitwear, the company excels in quality production, innovative designs, and sustainable practices. With state-of-the-art facilities, SINHA KNIT is a trusted partner in the global apparel industry, ensuring excellence and reliability.”



OUR FACTORY CERTIFICATIONS



GLOBAL

BUSINESS

PENETRATION



OFFBOARD

ON BOARD



Sinha Knit Industries Ltd.

Diversifying into EU & Russia

Confidential document & properties © ACME Garments Unit



Sinha Knit Industries Ltd.



“A LITTLE EFFORT TOWARDS SAVING THE ENVIRONMENT IS HIGHER THAN NO EFFORT”

SUSTAINABILITY

- 1.Planting Trees in Communities and on School Premises
- 2.Solar-energy Harvesting Systems
- 3.Wastewater Recycling Systems - ETP
- 4.Medical support
- 5.Fair price shop for the work-force

Take Action, Reduce Your Waste



🌍 *Be a Part of The Solution of sustainability*



KNITTING CAPACITY 2024



SINHA Knit Industries Limited

MONTHLY CAPACITY

MACHINE GAUGE-WISE

AUTOMATIC JACQUARD

Gauge	Machine Type	Number of Machines	In Pieces.
3GG	1.5-3 GG	20	20,000
5GG – 7GG	2.5-5 GG	257	2,50000
12GG	9-12GG	373	2,80000
Total		650	5,50,000

LINKING, IRON, PACKING

Monthly

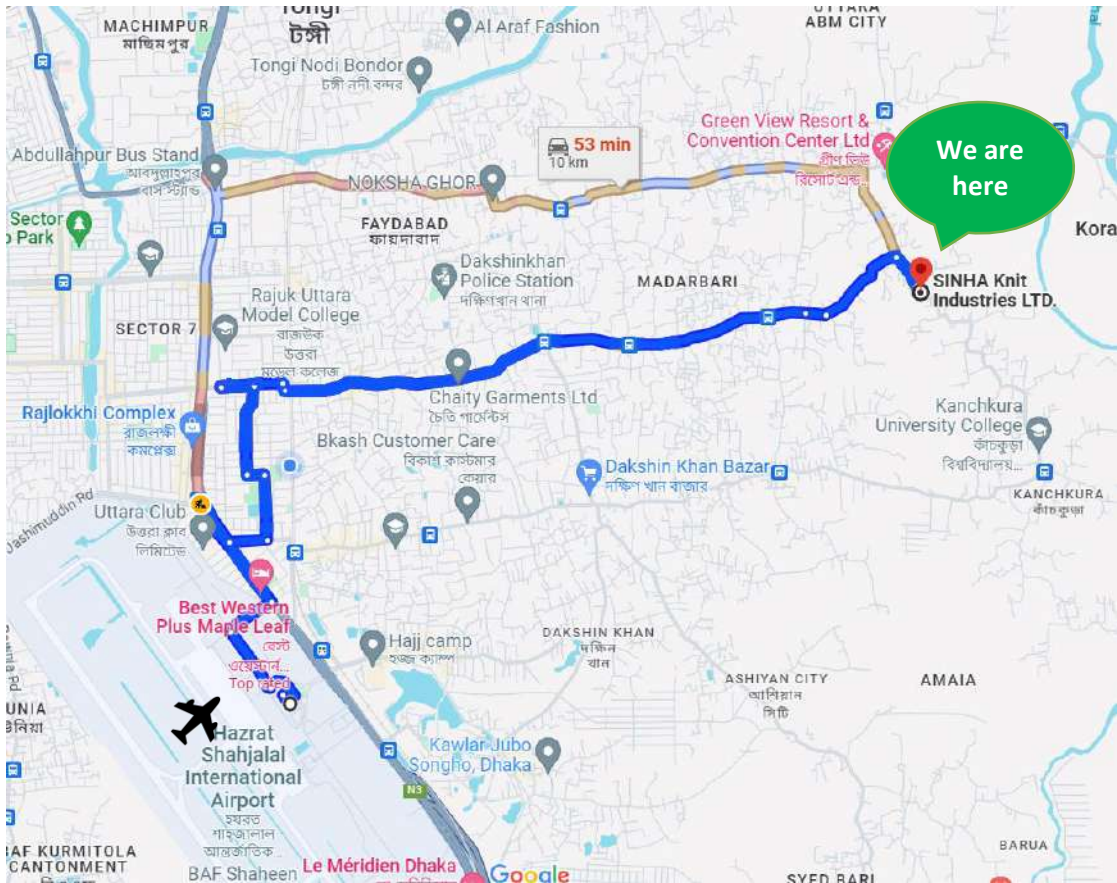
Total

Finishes

Operation		
Linking	Iron	Packing
5,90,000	5,70,000	5,50,000

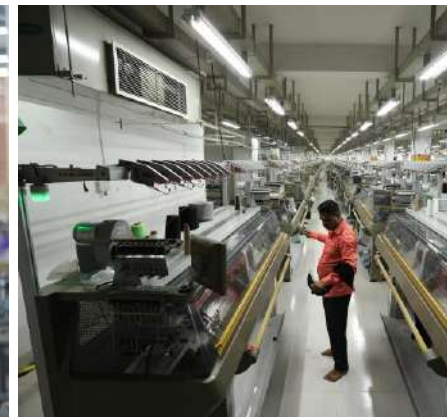
ADDING 200 SHIMA SHEIKI FULLY AUTOMATIC JACQUARD MACHINE IN 2024 JANUARY





“SINHA KNIT INDUSTRIES LTD.”

Chamurkhan, Uttarkhan, Uttara, Dhaka – 1230

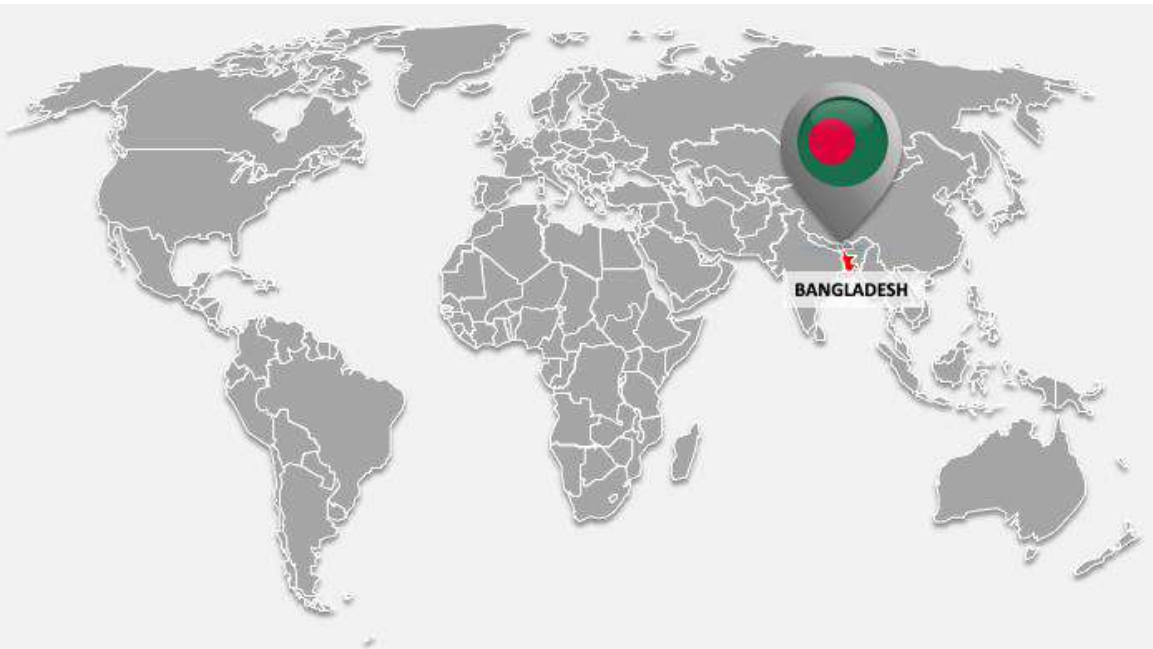


FACTORY LOCATION

OUR DESIGN

AND RESEARCH & DEVELOPMENT TEAM CENTRALIZED CLOSE TO THE PRODUCTS!

TREND – 2D CAD SIMULATION – YARN/ FABRIC
RESEARCH – TRAVEL TO FAIRS – GET MATERIALS
– TECHPACKS - PRODUCT DEVELOPMENT –
INNOVATIVE TECHNIQUES



Bold Concise Statement

AminaZ dedicated to providing exceptional support to our clients. We offer a wide range of services, including sourcing and buying assistance for Denim, Pants, Trousers, Non-denim, Knit, Sweaters. Our existing design and development team is equipped to offer comprehensive design services, reducing clients' costs and streamlining the creative process from trend development (WGSN) to final product outcome.

We take immense pride in our strong network within the dynamic Bangladesh apparel market, enabling us to source and export top-notch, quality products for our valued clients. Sustainability and ethical practices are at the heart of our operations, ensuring that our clients receive products adhering to global standards.

At Aminaz, client satisfaction is our ultimate priority. We collaborate closely with each client, understanding their unique requirements, and our services to meet their specific needs. From concept to delivery, we ensure a smooth and efficient journey, providing end-to-end solutions for a seamless buying experience.

Our commitment to excellence drives us to stay ahead of industry trends, offering our clients the latest fashion innovations and consumer insights. With our knowledge, expertise, and dedication to fostering lasting partnerships, we aim to be the preferred buying office for discerning retailers and brands alike.

GLOSSY & SHINE "Digital rendering creates looks that mimic glossy and high-shine liquid surfaces evolving our Subtle Shine trend. ombre stripes and printed yarn #sunset shades and #Gelato Pastel create soft gradients. Create texture in crumpled pleat effects and solid or plated color ribs." color

Glitter & print



AMINAZ DESIGN
Style : MIKASA
Composition: 100% ACRYLIC YARN
Weight : 11.19 LBS, Gauge: 5GG



AMINAZ DESIGN
Style : MR 0690
Composition: 100% RAW COTTON YARN
Weight : 9.10 LBS
Gauge: 12 GG



ACME
ACME GARMENTS UNIT

BANGLADESH



AMINAZ DESIGN
Style : JK-RU-020
Composition: 100% COTTON
Weight : 8.90 LBS
Gauge: 7 GG 5 PLY, Time: 37 min

PRODUCT DESIGN AW25
GLOSSY & SHINE
STYLES WITH BRIGHT COLOR & REFLECTIVE YARN AND DETAIL



Sweaters, hoodies, dresses, tops and tees, athleisure, bodysuits, sweaters, vest



AMINAZ DESIGN
Style No. : RU-SKNIT-M16
Composition: 100% COTTON MARL
Gauge: 7GG



Destroyed Knitting +

DESTROYED KNIT & WASH



Tint & Spray Print



High Density print



Destroy knit in metallic blends fiber





TWEED YARN



TWISTED & TUCK



COLOR BLOCKING



TWEED & PRINT

Marble Knit

“Bold versions of familiar checks and stripes. Introduce broken and blocky elements by mixing horizontal and vertical stripes and play with stitch interest and micro bird’s-eye stitch textures.”



SPACE DYE



BLENDED TWEED



PLAYFUL KNIT



BIRDSEYE JACQUARD



ME - KNITWEAR

DEVELOPMENT A STANDARD MARKET BREAKTHROUGH FOR GOOD BUSINESS



FASHION POLO



BASIC JUMPER



FASHION CREW



HALF ZIP



COZY KNIT



INTERSIA KNIT



FASHION HOODIE



TEXTURED JUMPER



KNITTED SHACKET



FASHION POLO



ACID WASH



CHRISTMAS

KNIT SHOPER

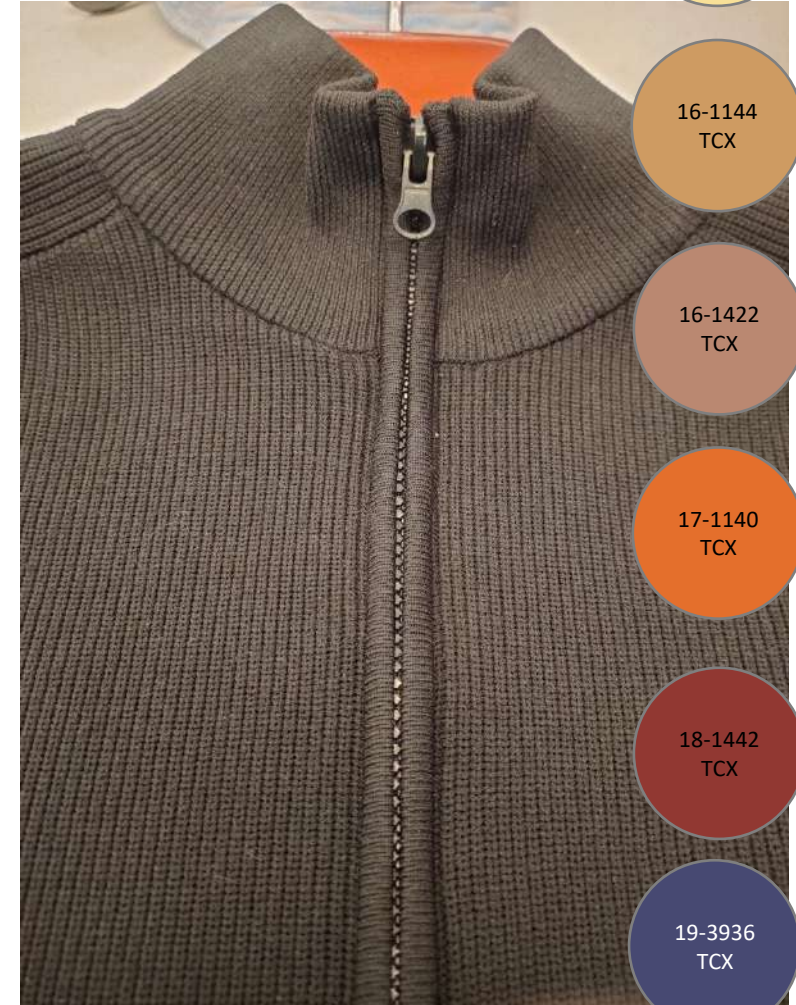
“Stick to simple natural shapes and textures and minimalist, timeless designs. Keep to plain knits, and explore micro-knit techniques including piqué, waffle, basketweave, honeycomb or subtle drop-and-tuck openwork stitches.”

Real Light Weight

CAD DESIGN SS25
FORMATION



AMINAZ DESIGN
Style : NYLON PULL ZIP
Composition: 100% NYLON YARN
Weight : 10.30 LBS
Gauge: 12 GG



12-0824
TCX

16-1144
TCX

16-1422
TCX

17-1140
TCX

18-1442
TCX

19-3936
TCX

19-3932
TCX

sweaters, tees, vests, crews, polos, trousers, shorts

KNIT SHOPPER

“Bold versions of familiar checks and stripes. Introduce broken and blocky elements by mixing horizontal and vertical stripes and play with stitch interest and micro bird's-eye stitch textures.”

Marble Knit

CAD DESIGN SS25
GRAPHICIST

WITH BRIGHT COLOR & REFLECTIVE YARN AND DETAIL



AMINAZ DESIGN
Style: ZM-01-OP1
Composition: 100% COTTON YARN
Weight: 14.25 LBS
Gauge: 7 GG



AMINAZ DESIGN
Style : AW24MARBLE KNIT2
Composition: 100% COTTON YARN
Gauge: 7 GG



AMINAZ DESIGN
Style : AW24MARBLE KNIT1
Composition: 100% COTTON YARN
Gauge: 7 GG

19-3932
TCX

16-4530
TCX

16-4530
TCX

18-3949
TCX

17-3730
TCX

12-0304
TCX

14-1208
TCX

sweaters, tees, vests, crews, polos, cardigans, trousers, shorts, loungewear

KNIT SHOPPER

“Bold versions of familiar checks and stripes. Introduce broken and blocky elements by mixing horizontal and vertical stripes and play with stitch interest and micro bird's-eye stitch textures.”

Marble Knit

CAD DESIGN SS25
GRAPHICIST

STYLES WITH BRIGHT COLOR & REFLECTIVE YARN AND DETAIL



AMINAZ DESIGN

Composition: 100% COTTON YARN

Gauge: 7 GG

19-3932
TCX

16-4530
TCX

16-4530
TCX

18-3949
TCX

17-3730
TCX

12-0304
TCX

14-1208
TCX



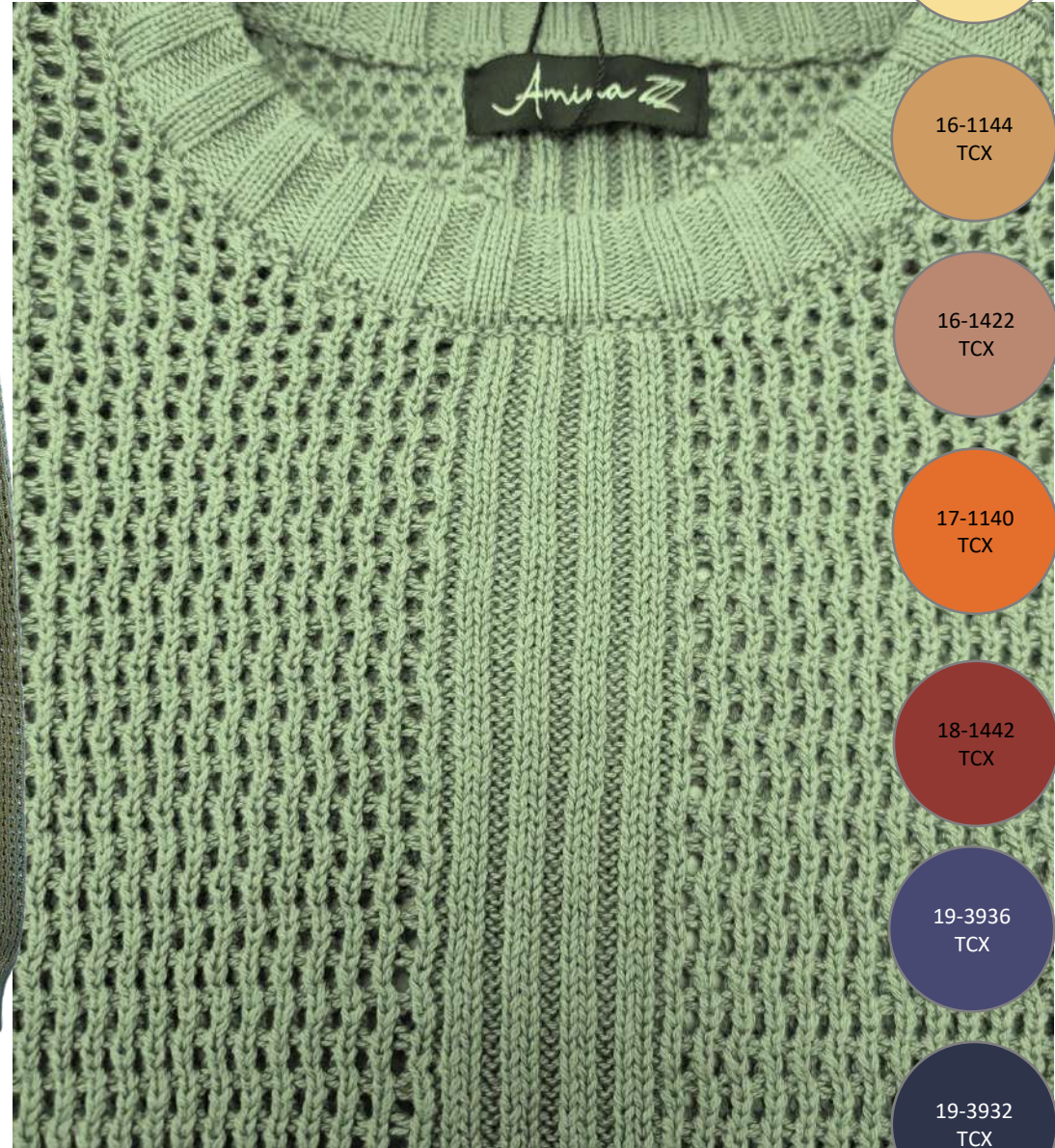
sweaters, tees, vests, crews, polos, cardigans, trousers, shorts, loungewear

KNIT SHOPER

“Stick to simple natural shapes and textures and minimalist, timeless designs. Keep to plain knits, and explore micro-knit techniques including piqué, waffle, basketweave, honeycomb or subtle drop-and-tuck openwork stitches.”

Real Light Weight

FORMATION
CAD DESIGN S S 25



12-0824
TCX

16-1144
TCX

16-1422
TCX

17-1140
TCX

18-1442
TCX

19-3936
TCX

19-3932
TCX

AMINAZ DESIGN
Style : AW24AUG049
Composition: 100% COTTON YARN
Weight : 9.40 LBS
Gauge: 7 GG

sweaters, tees, vests, crews, polos, trousers, shorts

KNIT SHOPER

“Continue to generate creativity, 3D knitting technology allows superfine, complex knits to be engineered in one piece, creating waste-free garments that evolve last season's ghostly illusion.”

Technical Knit

STYLE: RU-SKNIT-M05

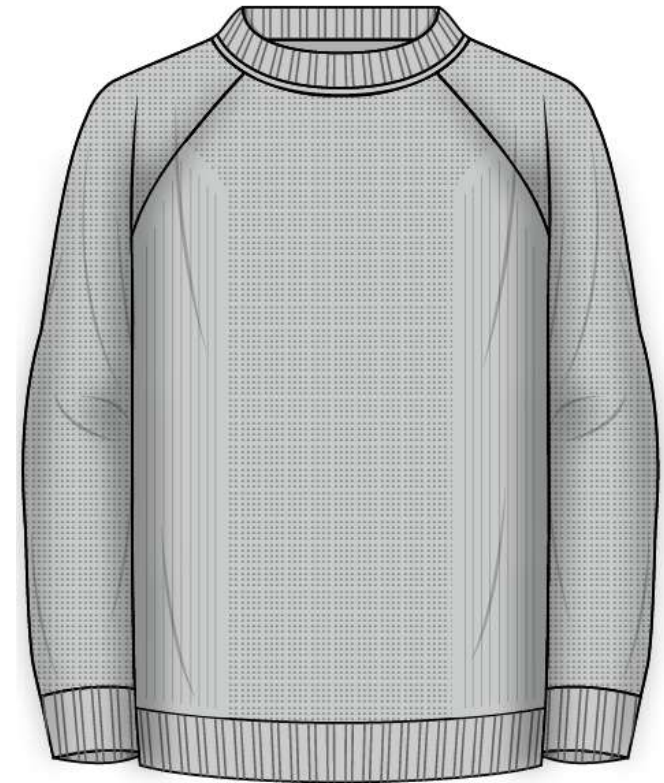
Featuring a round neckline, long sleeves and ribbed trims



100% Bright Viscose & Nylon, 2+1 Ply
Milano Allover



BOTTOM RIB HEIGHT: 6 CM



Body-mapped in
knitwear

18-4214
TCX

14-6408
TCX

12-0304
TCX

13-4303
TCX

19-4203
TCX

19-1220
TCX

19-0516
TCX

CAD DESIGN S S 2 5
CREATIVITY

WITH NEUTRAL COLOR AND STRUCTURES CREATE THE LOOK

tees, vests, crews, jackets, trousers



KNIT SHOPER

“Continue to generate creativity, 3D knitting technology allows superfine, complex knits to be engineered in one piece, creating waste-free garments that evolve last season's ghostly illusion.”

Technical Knit



AMINAZ DESIGN

Style : RU-SKNIT-M05

Composition: 100% COTTON & NYLON YARN

Weight : 10.55 LBS

Gauge: 12 GG



tees, vests, crews, jackets, trousers

18-4214
TCX

14-6408
TCX

12-0304
TCX

13-4303
TCX

19-4203
TCX

19-1220
TCX

19-0516
TCx

CREATIVITY
CAD DESIGN SS25
WITH NEUTRAL COLOR AND STRUCTURES CREATE THE LOOK



KNIT SHOPER

“Continue to generate creativity, 3D knitting technology allows superfine, complex knits to be engineered in one piece, creating waste-free garments that evolve last season's ghostly illusion.”

Technical Knit



AMINAZ DESIGN
Style : AW24AUG050

Composition: 60% COTTON 40% ACRYLIC YARN

Weight : 13.75 LBS

Gauge: 7 GG



18-4214
TCX

14-6408
TCX

12-0304
TCX

13-4303
TCX

19-4203
TCX

19-1220
TCX

19-0516
TCx

CREATIVITY
CAD DESIGN SS25

WITH NEUTRAL COLOR AND STRUCTURES CREATE THE LOOK

tees, vests, crews, jackets, trousers



KNIT SHOPER

“Continue to generate creativity, 3D knitting technology allows superfine, complex knits to be engineered in one piece, creating waste-free garments that evolve last season's ghostly illusion.”

Technical Knit



AMINAZ DESIGN
Style : A24AUG047
Composition: 60% COTTON
40% ACRYLIC YARN
Weight : 11.55 LBS
Gauge: 7 GG, Time : 52 MIN.



18-4214
TCX

14-6408
TCX

12-0304
TCX

13-4303
TCX

19-4203
TCX

19-1220
TCX

19-0516
TCx

WITH NEUTRAL COLOR AND STRUCTURES CREATE THE LOOK

CAD DESIGN S S 2 5

CREATIVITY

tees, vests, crews, jackets, trousers



KNIT SHOPPER

“Continue to generate creativity, 3D knitting technology allows superfine, complex knits to be engineered in one piece, creating waste-free garments that evolve last season's ghostly illusion.”

Performance

CAD DESIGN SS25
CREATIVITY



Ripple Knit as Key



Micro texture in Athl form



18-4214
TCX

14-6408
TCX

12-0304
TCX

13-4303
TCX

19-4203
TCX

19-1220
TCX

19-0516
TCx

tees, vests, crews, jackets, trousers

GLOSSY & SHINE

"Soft transformative knits. Give designs a liquid finish, watery glow and mother-of-pearl sheen with sustainable coatings and gentle dye effects."

Rustic Illusion



NIGHT GLOW CASPER THE GHOST



DESTROYED KNIT & PRINT

AMINAZ DESIGN
Style : SZ-RUWS1
Composition: 100% UN-DYED COTTON 2/20
Weight : 15 LBS
Gauge: 5 GG 5 PLY
Time: 40 min

athleisure, tops and vest, skirts, loungewear, leggings, bodices, cardigan and tees

PRODUCT DESIGN SS25

AI MOVEMENT

STYLES WITH BRIGHT COLOR & REFLECTIVE YARN AND DETAIL



3D TEXTURE



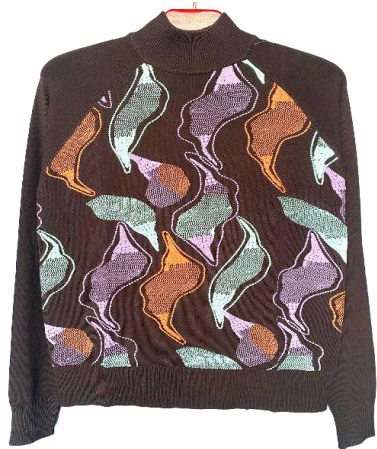
1.5GG COZY KNIT



COLOR BLOCKING

Variation of Knit

"In SS25, playful patterns and innovative textures are essential. We focus on fashionable products, emphasizing cozy knits, unique prints, and wash effects for everyday ladieswear. Long styling combined with these creative elements ensures our designs are both trendy and comfortable, making day-to-day fashion effortlessly stylish and modern."



RUBBER PRINT



MARBLE WASH



CHENILLE FANCY YARN



PRINTING & EFFECT



DIGITAL DUALITY “Digital twinning will open new possibilities of what can be achieved through technology in a range of fields with colors and jacquard knit. Develop into summer qualities in napped, pile and novelty constructions.”

Shacket

PRODUCT DESIGN SS25

LIGHT & MID GAUGE SMART CASUAL SILHOUETTE WITH DETAILING



AMINAZ DESIGN

Style : JK-DK 04

Composition: 50% COTTON 50% ACRYLIC

Weight : 10.70 LBS

Gauge: 7 GG



Detailing

C O L L E C T I O N



FLAT CAD DESIGN



CUFF & BOTTOM LACE DETAILING



BODY KNIT - SHEER TEXTURE



TEXTURE IDEA: RE-POLY & COTTON



FOR NECK DETAILING

KEY DETAILING



BASIC JUMPER



REACTIVE PRINTS



OVERSIZED COZY



HALF ZIP



FEATHERS



KNIT TEXTURE



FASHION FULL ZIP



CABLE HOODIES



INTERSIA KNIT



PLATED BLOCKS



CHENILLE YARN



KNITTED SKIRT/ DRESS



SUMMER CROP



PARTY KNTIWEAR



TROPHY COLLAR



SCALLOP EDGE



SUMMER SLITS



SHEER TEXTURE



OPEN KNIT



FASHION TOP



FASHION TOP



MERINO WOOL JUMPER

GLOSSY & SHINE

Lurex Open Knit

"Digital rendering creates looks that mimic glossy and high-shine liquid surfaces evolving our Subtle Shine trend. ombre stripes and printed yarn #sunset shades and #Gelato Pastel create soft gradients. Create texture in crumpled pleat effects and solid or plated colour ribs."color



AMINAZ DESIGN
Style : MIKASA
Composition: 100% ACRYLIC YARN
Weight : 11.19 LBS
Gauge: 5GG

Sweaters, hoodies, dresses, tops and tees, athleisure, bodysuits, sweaters, vest

GLOSSY & SHINE

CAD DESIGN SS25

STYLES WITH BRIGHT COLOR & REFLECTIVE YARN AND DETAIL



GLOSSY & SHINE

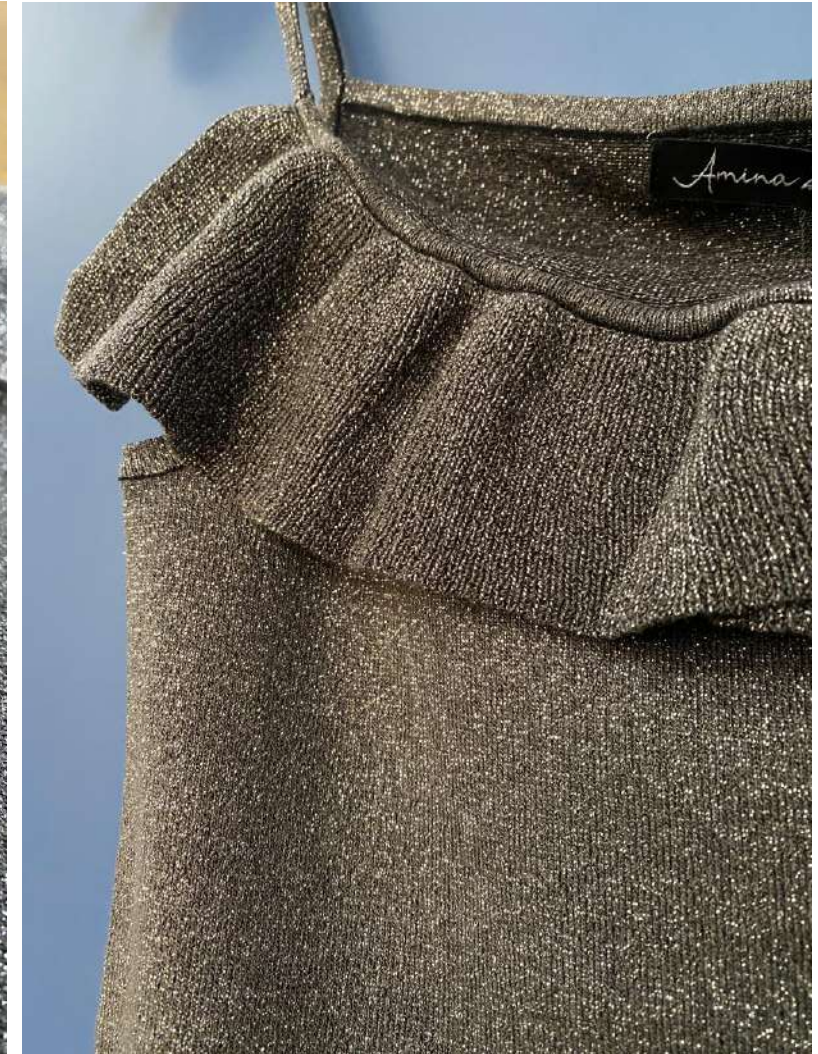
"Digital rendering creates looks that mimic glossy and high-shine liquid surfaces evolving our Subtle Shine trend. ombré stripes and printed yarn #sunset shades and #Gelato Pastel create soft gradients. Create texture in crumpled pleat effects and solid or plated colour ribs."color

Fashion Tops

GLOSSY & SHINE

CAD DESIGN SS25

STYLES WITH BRIGHT COLOR & REFLECTIVE YARN AND DETAIL



Viscose 17% Lurex (Blended Quality)
12gg

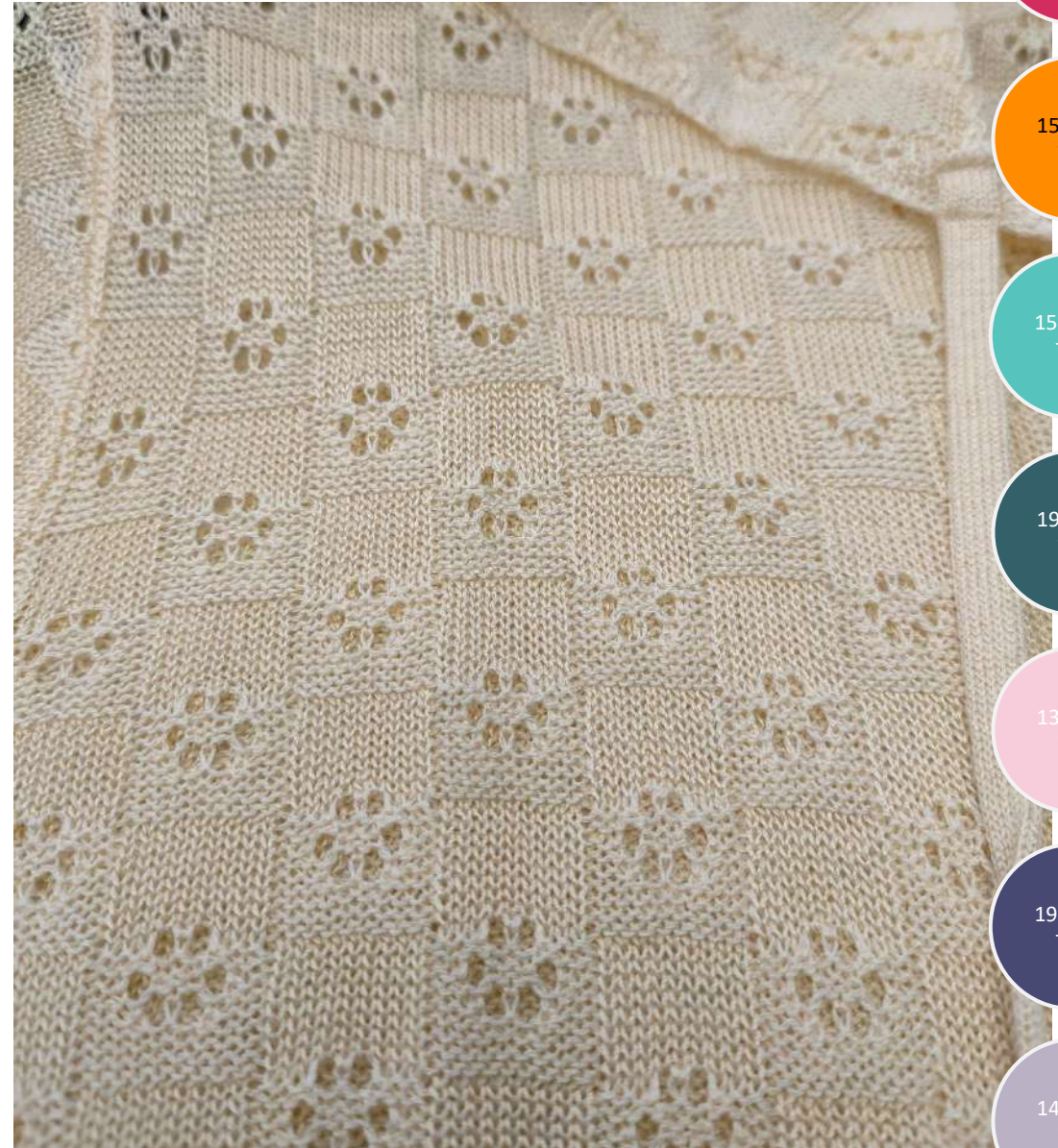
Sweaters, hoodies, dresses, tops and tees, athleisure, bodysuits, sweaters, vest



AI MOVEMENT

Athletic Knit

"Embrace the essence of femininity in SS24/25 with our ladies' sweater trend. Soft pastels, intricate knits, and contemporary silhouettes define the collection. Elevate your style with lightweight, chic designs that effortlessly transition from spring to summer, capturing the Ai generated design that reflects the pastel tones."



AMINAZ DESIGN

Style : AW24WWURFW15

Composition: 100% VISCOSE & BRIGHT RAYON YARN

Weight : 3.30 LBS

Gauge: 12 GG

T : 65 M

18-1754
TCX

15-1164
TCX

15-5218
TCX

19-5025
TCX

13-2801
TCX

19-3936
TCX

14-3907
TCX

athleisure, tops and vest, skirts, loungewear, leggings, bodies, cardigan and tees

AI MOVEMENT
CAD DESIGN SS25
STYLES WITH BRIGHT COLOR & REFLECTIVE YARN AND DETAIL



GLOSSY & SHINE

"Digital rendering creates looks that mimic glossy and high-shine liquid surfaces evolving our Subtle Shine trend. ombré stripes and printed yarn #sunset shades and #Gelato Pastel create soft gradients. Create texture in crumpled pleat effects and solid or plated colour ribs."color

Glitter print



AMINAZ DESIGN
Style : MIKASA
Composition: 100% ACRYLIC YARN
Weight : 11.19 LBS
Gauge: 5GG

Sweaters, hoodies, dresses, tops and tees, athleisure, bodysuits, sweaters, vest

CAD DESIGN SS25
GLOSSY & SHINE

STYLES WITH BRIGHT COLOR & REFLECTIVE YARN AND DETAIL



DIGITAL DUALITY “Digital twinning will open new possibilities of what can be achieved through technology in a range of fields with colors and jacquard knit. Develop into summer qualities in napped, pile and novelty constructions.”

Long Striped Dress

CAD DESIGN SS25

SPRING STYLING WITH VINTAGE EFFECTS ON YARN SURFACE



AMINAZ DESIGN
Style No. : SS25-PRE.16
Composition: 70% Viscose 30% NYLON
Gauge: 12GG
Weight: 16.90 LBS



AMINAZ DESIGN
Style No. : LKD.218SKD00RE
Composition: 100% Acrylic
Gauge: 12GG
Weight: 8.20 LBS



KNIT SHOPPER

"Embrace the essence of femininity in SS24/25 with our ladies' sweater trend. Soft pastels, intricate knits, and contemporary silhouettes define the collection. Elevate your style with lightweight, chic designs that effortlessly transition from spring to summer, capturing the spirit of the season with grace and sophistication."

Fashion Tops

CAD DESIGN SS25

STYLES WITH BRIGHT COLOR & REFLECTIVE YARN AND DETAIL



Burning Man Trend

18-4214
TCX

14-6408
TCX

12-0304
TCX

13-4303
TCX

11-4800
TCX

16-1422
TCX

19-1220
TCX

tops, sweatshirts, hoodies, athleisure, dresses, vests, skirts



KNIT SHOPPER

Fashion Tops

"Embrace the essence of femininity in SS24/25 with our ladies' sweater trend. Soft pastels, intricate knits, and contemporary silhouettes define the collection. Elevate your style with lightweight, chic designs that effortlessly transition from spring to summer, capturing the spirit of the season with grace and sophistication."

CAD DESIGN SS25

STYLES WITH BRIGHT COLOR & REFLECTIVE YARN AND DETAIL



AMINAZ DESIGN

Style No. : AW24WWURFW11 (OP2)
Composition: 80% Viscose 20% Nylon
Gauge: 12GG,
WT: 3.50 LBS, T: 30



AMINAZ DESIGN

Style No. : HERRINGBONE KNIT
Composition: 100% Cotton
Gauge: 7GG,

18-4214
TCX

14-6408
TCX

12-0304
TCX

13-4303
TCX

11-4800
TCX

16-1422
TCX

19-1220
TCX

tops, sweatshirts, hoodies, athleisure, dresses, vests, skirts



FASHION



AMINAZ DESIGN
Style No. : KSET-AW25-AB
Composition: 92% POLYESTER 4%
NYLON 4% SPANDEX
Gauge: 7GG



CROP SUMMER VEST SETS

Confidential document & properties © ACME Garments Unit

Striped Flair, showcases an array of captivating striped patterns. From classic nautical styles to bold and colorful designs, this trend brings a fresh and dynamic vibe to winter wardrobes.



Body 1 – 100% Nylon
Body 2 – 100% Bright Viscose
12GG



Design Range Plan

Confidential document & properties © ACME Garments Unit

colorful patterns, Cotton base, sustainable, vertical blocks, intarsia, pin stripes, Ombre stripes

DESIGN STUDIO
Amina Z
SINCE 2023

KNIT SHOPPER

"Embrace the essence of femininity in SS24/25 with our ladies' sweater trend. Soft pastels, intricate knits, and contemporary silhouettes define the collection. Elevate your style with lightweight, chic designs that effortlessly transition from spring to summer, capturing the spirit of the season with grace and sophistication."

Fashion Tops

CAD DESIGN SS25

STYLES WITH BRIGHT COLOR & REFLECTIVE YARN AND DETAIL



18-4214
TCX

14-6408
TCX

12-0304
TCX

13-4303
TCX

11-4800
TCX

16-1422
TCX

19-1220
TCX

tops, sweatshirts, hoodies, athleisure, dresses, vests, skirts



KNIT SHOPER

"Embrace the essence of femininity in SS24/25 with our ladies' sweater trend. Soft pastels, intricate knits, and contemporary silhouettes define the collection. Elevate your style with lightweight, chic designs that effortlessly transition from spring to summer, capturing the spirit of the season with grace and sophistication."

New Structures

CAD DESIGN SS25

STYLES WITH BRIGHT COLOR & REFLECTIVE YARN AND DETAIL



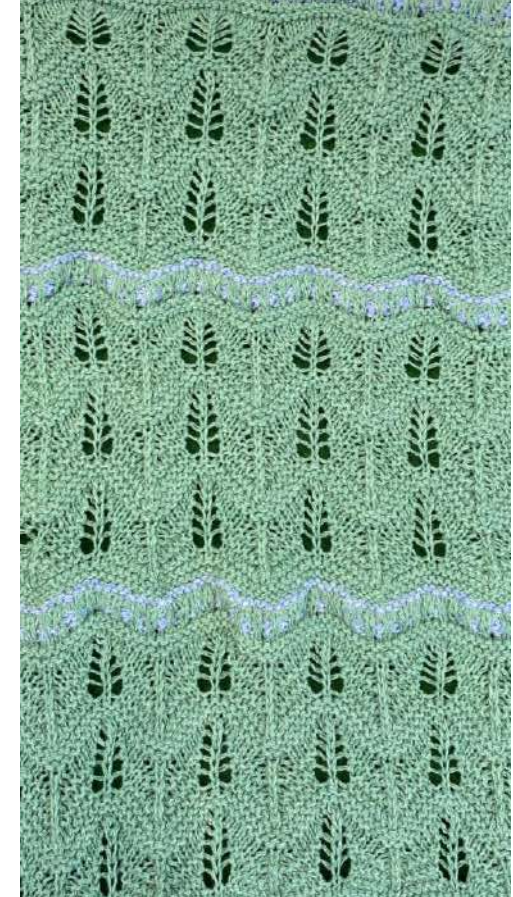
SWATCH-ST10
70% Recycle Cotton 30% Polyester, 7GG



SWATCH-ST03



SWATCH-ST09



SWATCH-ST01

18-4214
TCX

14-6408
TCX

12-0304
TCX

13-4303
TCX

11-4800
TCX

16-1422
TCX

19-1220
TCX

tops, sweatshirts, hoodies, athleisure, dresses, vests, skirts





Re-cycled



Eco-Friendly



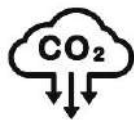
Less Water Waste



Low Energy Consumption



Low CO2 Emission

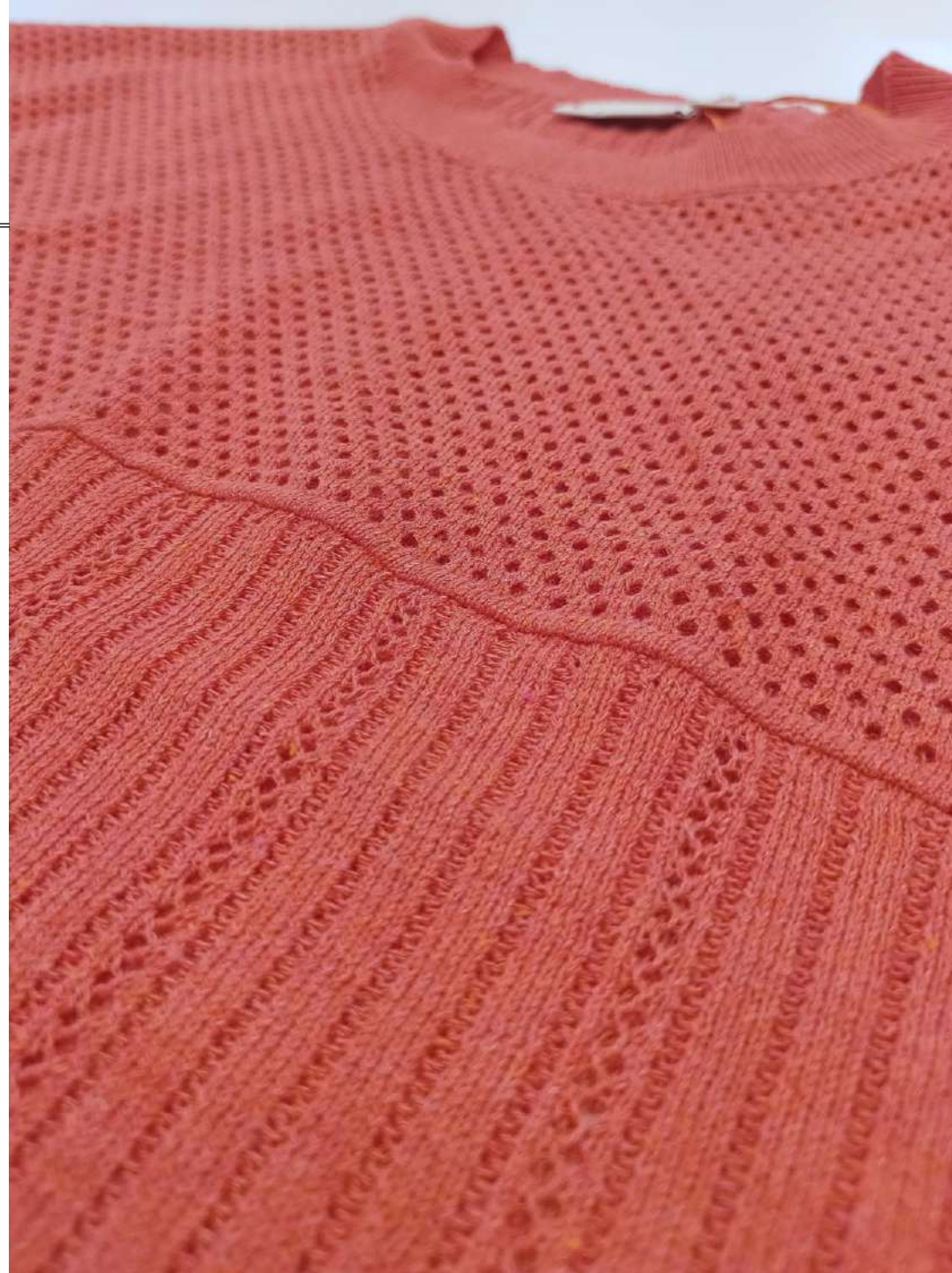


C
O
L
L
E
C
T
I
O
N



AMINAZ DESIGN
Style : SKIL-ROZ-09

Composition: 70% RE-COTTON 30% POLYESTER
Weight : 5.90 LBS
Gauge: 12 GG



KEY
DETAILING

DIGITAL DUALITY "Digital twinning will open new possibilities of what can be achieved through technology in a range of fields with colors and jacquard knit. Develop into summer qualities in napped, pile and novelty constructions."

Relax Poncho

PRODUCT DESIGN SS25

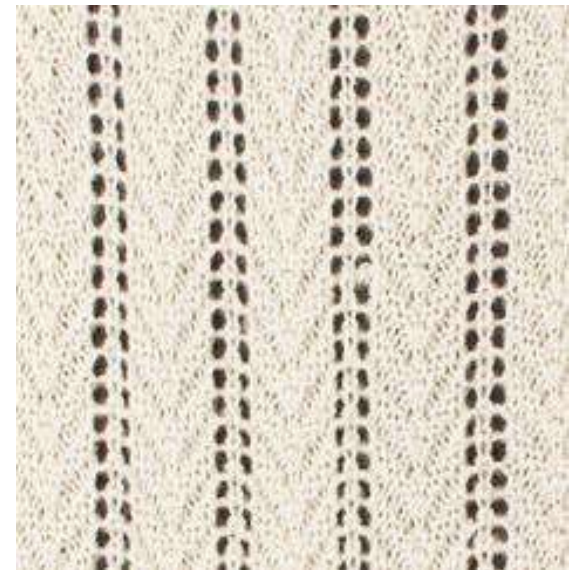
LIGHT & MID GAUGE SMART CASUAL SILHOUETTE WITH DETAILING



BOAT NECK IN VEE SHAPE



BOAT NECK IN VEE SHAPE



Neck & Knit Detailing



“PREMIUM KNITWEAR”

WOOL & BLENDED QUALITIES
“SINHA KNIT INDUSTRIES LTD”

PROPERTIES OF MERINO



100% natural

Wool is 100% natural grown year-round by Australia's 68 million sheep, consuming a simple blend of water, air, sunshine and grass.



100% biodegradable

When a wool fiber is disposed of, it will naturally decompose in soil in a matter of years, slowly releasing valuable nutrients back into the earth.



Naturally breathable

Merino wool is one of the most breathable fibers. Wool fibers can absorb large quantities of moisture vapor then move it away to evaporate into the air.

1. Soft. Merino wool proves to be delightfully soft due to its fineness. It ranges from 14.5 to 23.5 microns, while a human hair is 30 microns thick! Fine Merino wool fiber can bend much more than coarser wool fibers. High quality Merino wool fabric doesn't require any softener or conditioner. It is 3 times softer than natural silk.

2. Elastic. Merino wool fabrics let the body move freely thanks to their molecular structure.

The fiber may be safely stretched from 25 to 30% of its natural length. It will regain its original shape after stretching up to 50% of length when wet! You'll be surprised to know that Merino wool is 5 times more elastic than cotton.

3. Absorbent. Known for its moisture-wicking qualities, Merino is also water-repellent. It soaks up to 30% of its weight still feeling dry because of the fiber scale structure. Wool is perfect for any climate type and weather conditions as it absorbs moisture from the humid environment and releases it to the drier atmosphere.

4. Warm and Cool. As Merino wool fabrics have low heat conductivity, they feel like they have in-built climate control. Tiny scales on the fiber surface and the crimp in the fiber create 'air pockets' that keep you warm when it's cold outside and cool when the weather is hot. A natural insulator, wool is worn by Bedouins in Sahara Desert and used in mattress-making for the same purpose – body temperature regulation.

5. Hypoallergenic. It is well-known that Merino wool is beneficial for allergy and asthma sufferers. Recent medical research shows that fine Merino wool garments worn next to the skin are a natural remedy against eczema. They act as 'second skin' and stabilize the humidity level and the micro-climate of the skin surface. They reduce such symptoms as itch, skin redness and rash, especially in children and people with dermatological problems.



As Merino fiber creates an anti-microbial environment, it is not prone to emanating unpleasant odors.



Pliable, elastic and resilient, Merino wool clothes resist wrinkles and drape well.



Merino wool absorbs moisture vapor. This is the reason why it is static resistant and flame retardant.



Merino is a 100% natural and renewable sustainable resource. It is also biodegradable, organic and environmentally-friendly.

Organic Elegance, embraces minimalistic designs and uses carefully selected yarns that perfectly align with the natural and sustainable ethos. It combines simplicity and sophistication, offering a refined and eco-conscious fashion statement.

Based on the WGSN color trend AW24/25



AMINAZ DESIGN

Style No. : WOOL MENSWEAR

Composition: 100% WOOL

Weight: 8.75 LBS

Gauge: 12GG

PREMIUM PRODUCT

Confidential document & properties © ACME Garments Unit
Casual smart, Neutral colors, small detailing, strong cable statements, warm yarns



Organic Elegance, embraces minimalistic designs and uses carefully selected yarns that perfectly align with the natural and sustainable ethos. It combines simplicity and sophistication, offering a refined and eco-conscious fashion statement.

Based on the WGSN color trend AW24/25

PREMIUM PRODUCT



18-1442 TCX

18-0529 TCX

14-1208 TCX

16-1318 TCX

12-0304 TCX

Brand: Aminaz
Customer: General R&D
Style name: RU-SKNIT-M15
Composition: 100% Merino wool
Treated yarn, 19.5 MIC, 2/36 Nm
Wash: regular treatment
Weight: / lbs

FOB: \$

Confidential document & properties © ACME Garments Unit
Casual smart, Neutral colors, small detailing, strong cable statements, warm yarns



Organic Elegance, embraces minimalistic designs and uses carefully selected yarns that perfectly align with the natural and sustainable ethos. It combines simplicity and sophistication, offering a refined and eco-conscious fashion statement.

Based on the WGSN color trend AW24/25

PREMIUM PRODUCT



18-1442 TCX

18-0529 TCX

14-1208 TCX

16-1318 TCX

12-0304 TCX

Brand: Aminaz
Customer: General R&D
Style name: Ru-sknit-w03
Composition: 50% merino 50% acrylic
Treated yarn, 19.5 MIC, 2/36 Nm
Wash: regular treatment
Weight: 5.15/ lbs

FOB: \$8.90 (R&D spec)

Style name: **O-NECK (Basic)**
Composition: 50% merino 50% acrylic
Treated yarn, 19.5 MIC, 2/36 Nm
Wash: regular treatment
Weight: 5.15/ lbs

FOB: \$ 10.00 (DKC standard)

Confidential document & properties © ACME Garments Unit
Casual smart, Neutral colors, small detailing, strong cable statements, warm yarns



Organic Elegance, embraces minimalistic designs and uses carefully selected yarns that perfectly align with the natural and sustainable ethos. It combines simplicity and sophistication, offering a refined and eco-conscious fashion statement.

Based on the WGSN color trend AW24/25

PREMIUM PRODUCT



18-1442 TCX

18-0529 TCX

14-1208 TCX

16-1318 TCX

12-0304 TCX

Brand: Aminaz
Customer: General R&D
Style name: SKNIT-M-13
Composition: 80% Lambswool 20% Nylon
Treated yarn, 2/16 Nm
Wash: regular treatment
Weight: 6.95/ lbs

FOB: \$

Confidential document & properties © ACME Garments Unit
Casual smart, Neutral colors, small detailing, strong cable statements, warm yarns

